

COMBUSTION HEATING CATALOGUE

OCTOBER 2025

*Quality Air Conditioning Products
Exceptional Service*

About ADA

The ADA Group stands as a cornerstone in the Australian HVAC industry, with a rich legacy of delivering high-quality air diffusion and climate control solutions. We are a proud Australian family-owned company with over 35 years in the industry, driven by the needs and expectations of our valued customers. Operating through a network of ten strategic branches across Australia, we bring together two trusted brands: Air Diffusion Australia and Paltech.

Air Diffusion Australia has built a reputation as a leading manufacturer and supplier of innovative HVAC components since its establishment in 1989. With five branches serving South Australia, Queensland, and Northern Territory, we are committed to providing a comprehensive range of products that meet the highest standards of quality and innovation.

Paltech has five locations, situated in Melbourne's North, East, Southeast, West and country Victoria. Since 1991, Paltech has been manufacturing high-quality ducted heating and cooling products, building a strong reputation in the industry. Since joining the ADA Group, they have expanded their product range to include specialised HVAC components, further solidifying their commitment to excellence.



Recommendations and advice regarding the use of the products described in this catalogue are to be taken as a guide only and are given without liability on the part of Air Diffusion Australia or its employees.



Combustion Heating Index

Page	
13	Angle Support Brackets
9	Aquaseals
10, 11	Bends
12	Ceiling Boxes & Flanges
8	Chimney Plates
8	Chinamans Hats
7	Cowls
13	Door Frames
5	Direct Offset 45°
11	Fascia Blank off Panels
13	Fire Bricks
8	Flashing Cones
5	Flexible Flue Stainless Steel & Adaptor
1, 2, 3	Flue Kits
3, 4, 5	Flue Pipe & Casing
5	Flue Reflectors
6	Locating Rings
13	Paint & Sealant
11	Penetration Kits
6	Perforated Flue
13	Reducers
5	T-Pieces
14	Warm Air Transfer System (WATS) Kits
15, 16	WATS Kit Components - Flexible Duct / Outlets / Fans / Thermostats / Tape / Y's

Want more information?

Scan the QR code or visit the ADA website to explore our online catalogue and web store. Both are regularly updated with the latest technical data and images.

Product availability and pricing may vary and is subject to change. We recommend confirming stock pricing with your local ADA store before ordering.

Please note: All bulk orders are supplied from Salisbury, SA.




SCAN HERE



STAINLESS STEEL KIT (Double Cased) - TRIPLE SKIN

Stainless Steel 304 Grade 0.55

UNPAINTED KITS (Ceiling box & flange supplied in Omega Black)



SK4	(4") 102mm
SK45	(4.5") 114mm
SK5	(5") 127mm
SK6	(6") 152mm
SK7	(7") 178mm
SK8	(8") 203mm

PAINTED KITS

4" Kit	PSK4OB	(4") 102mm	Omega Black
	PSK4C	(4") 102mm	Omega Charcoal
	PSK4O	(4") 102mm	Other Colour#
4.5" Kit	PSK45OB	(4.5") 114mm	Omega Black
	PSK45C	(4.5") 114mm	Omega Charcoal
	PSK45O	(4.5") 114mm	Other Colour#
5" Kit	PSK5OB	(5") 127mm	Omega Black
	PSK5C	(5") 127mm	Omega Charcoal
	PSK5O	(5") 127mm	Other Colour#
6" Kit	PSK6OB	(6") 152mm	Omega Black
	PSK6C	(6") 152mm	Omega Charcoal
	PSK6O	(6") 152mm	Other Colour#
7" Kit	PSK7OB	(7") 178mm	Omega Black
	PSK7C	(7") 178mm	Omega Charcoal
	PSK7O	(7") 178mm	Other Colour#
8" Kit	PSK8OB	(8") 203mm	Omega Black
	PSK8C	(8") 203mm	Omega Charcoal
	PSK8O	(8") 203mm	Other Colour#



Kit contains:

- 4 Lengths Stainless Steel Inner Flue 900 Long
- 1 Length Stainless Steel Inner Flue 450 Long
- 2 Lengths Galvabond Inner Flue Casing 900 Long
- 2 Lengths Galvabond Outer Flue Casing 900 Long*
- 1 Standard Spun Cowl*
- 1 Ceiling Box Flange*
- 1 Ceiling Box
- 2 Angle Support Brackets
- 1 Installation Guide
- * VARIATIONS AVAILABLE - SEE NEXT PAGE

AUSTRALIAN STANDARD FLUE KITS

ALL FLUE KITS ARE MANUFACTURED TO AUSTRALIAN / NEW ZEALAND STANDARDS AS/NZS2918-2019

PERFORATED KIT (DOUBLE CASED) TRIPLE SKIN Stainless Steel 304 Grade 0.55





6" Herringbone	PHK6OB	(6") 152mm - Herringbone	Omega Black
	PHK6C	(6") 152mm - Herringbone	Omega Charcoal
	PHK6O	(6") 152mm - Herringbone	Other Colour#
6" Clover Leaf	PCK6OB	(6") 152mm - Cloverleaf	Omega Black
	PCK6C	(6") 152mm - Cloverleaf	Omega Charcoal
	PCK6O	(6") 152mm - Cloverleaf	Other Colour#
7" Clover Leaf	PCK7OB	(7") 178mm - Cloverleaf	Omega Black
	PCK7C	(7") 178mm - Cloverleaf	Omega Charcoal
	PCK7O	(7") 178mm - Cloverleaf	Other Colour#





Kit contains:

- 2 Lengths Perforated Flue 900 Long*
- 4 Lengths Stainless Steel Inner Flue 900 Long
- 1 Length Stainless Steel Inner Flue 450 Long
- 2 Lengths Galvabond Inner Flue Casing 900 Long
- 2 Lengths Galvabond Outer Flue Casing 900 Long*
- 1 Standard Spun Cowl*
- 1 Ceiling Box Flange*
- 1 Ceiling Box
- 1 Locating Ring
- 2 Angle Support Brackets
- 1 Installation Guide
- * VARIATIONS AVAILABLE - SEE BELOW

VARIATION TO ALL KITS

	VKWC	Wind Cowl Additional cost for alternative to standard Spun Cowl	
	VKVC	Vertical Discharge Cowl Additional cost for alternative to standard Spun Cowl	
	VKPFOB	Pitched Flange	Omega Black
	VKPFC	Additional cost for alternative to Ceiling Box Flange	Omega Charcoal
	VKPFO		Other Colour#
	VKCBF	Colourbond Flue Additional cost for alternative to Galvabond Flue. Includes both pieces of outer casing.	

VARIATION TO PERFORATED KIT

	VKPCSOB	Cloverleaf with Shield	Omega Black
	VKPCSC	Additional cost for Inbuilt Shield	Omega Charcoal
	VKPCSO		Other Colour#
	VKPHSOB	Herringbone with Shield	Omega Black
	VKPHSC	Additional cost for Inbuilt Shield	Omega Charcoal
	VKPHSO		Other Colour#

GAS FREE STANDING FLUE KITS

GFKOB	(4") 102mm Kit Painted	Omega Black
GFKO	(4") 102mm Kit Painted	Other Colour#



Kit contains:

- 4 Galvanised Inner Flues 900 Long
- 3 Painted Outer Flues 900 Long
- 1 Galvanised Outer Flue 900 Long
- 1 Gas Cowl
- 1 Reducing Cone
- 1 Locating Ring
- 1 Ceiling Ring
- 1 Installation Guide

STAINLESS STEEL CHIMNEY FLUE KIT

Stainless Steel 304 Grade 0.55

CFK (6") 152mm Kit



Kit contains:

- 4 Lengths Stainless Steel Flue Pipe 900 Long
- 1 Length Stainless Steel Inner Flue 450 Long
- 1 Chimney Plate
- 1 Cowl
- 1 Installation Guide

STAINLESS STEEL FLUE PIPE 900mm LONG

Stainless Steel 304 Grade 0.55



SF4	(4")	102mm x 900mm
SF45	(4.5")	114mm x 900mm
SF5	(5")	127mm x 900mm
SF6	(6")	152mm x 900mm
SF7	(7")	178mm x 900mm
SF8	(8")	203mm x 900mm
SF9	(9")	228mm x 900mm
SF10	(10")	254mm x 900mm
SF11	(11")	279mm x 900mm
SF12	(12")	305mm x 900mm
SF14	(14")	356mm x 900mm
SF16	(16")	406mm x 900mm
SF18	(18")	456mm x 900mm

STAINLESS STEEL FLUE PIPE 450mm LONG

Stainless Steel 304 Grade 0.55



SF445	(4")	102mm x 450mm
SF4545	(4.5")	114mm x 450mm
SF545	(5")	127mm x 450mm
SF645	(6")	152mm x 450mm
SF745	(7")	178mm x 450mm
SF845	(8")	203mm x 450mm

STAINLESS STEEL FLUE PIPE PAINTED 900mm LONG



SFP4OB	(4")	102mm x 900mm	Omega Black
SFP4C	(4")	102mm x 900mm	Omega Charcoal
SFP4O	(4")	102mm x 900mm	Other Colour#
SFP45OB	(4.5")	114mm x 900mm	Omega Black
SFP45C	(4.5")	114mm x 900mm	Omega Charcoal
SFP45O	(4.5")	114mm x 900mm	Other Colour#
SFP5OB	(5")	127mm x 900mm	Omega Black
SFP5C	(5")	127mm x 900mm	Omega Charcoal
SFP5O	(5")	127mm x 900mm	Other Colour#
SFP6OB	(6")	152mm x 900mm	Omega Black
SFP6C	(6")	152mm x 900mm	Omega Charcoal
SFP6O	(6")	152mm x 900mm	Other Colour#
SFP7OB	(7")	178mm x 900mm	Omega Black
SFP7C	(7")	178mm x 900mm	Omega Charcoal
SFP7O	(7")	178mm x 900mm	Other Colour#
SFP8OB	(8")	203mm x 900mm	Omega Black
SFP8C	(8")	203mm x 900mm	Omega Charcoal
SFP8O	(8")	203mm x 900mm	Other Colour#
SFP9OB	(9")	228mm x 900mm	Omega Black
SFP9C	(9")	228mm x 900mm	Omega Charcoal
SFP9O	(9")	228mm x 900mm	Other Colour
SFP10OB	(10")	254mm x 900mm	Omega Black
SFP10C	(10")	254mm x 900mm	Omega Charcoal
SFP10O	(10")	254mm x 900mm	Other Colour#

GALVANISED CASING FLUE 900mm LONG



GF4	(4")	102mm x 900mm
GF45	(4.5")	114mm x 900mm
GF5	(5")	127mm x 900mm
GF6	(6")	152mm x 900mm
GF7	(7")	178mm x 900mm
GF8	(8")	203mm x 900mm
GF9	(9")	228mm x 900mm
GF10	(10")	254mm x 900mm
GF11	(11")	279mm x 900mm
GF12	(12")	305mm x 900mm
GF13	(13")	330mm x 900mm
GF14	(14")	356mm x 900mm
GF16	(16")	406mm x 900mm
GF18	(18")	457mm x 900mm

GALVANISED CASING FLUE 450mm LONG

GF845	(8")	203mm x 450mm
GF1045	(10")	254mm x 450mm

ZINC ANNEAL PAINTED FLUE 900mm LONG



ZPF6OB	(6")	152mm x 900mm	Omega Black
ZPF6C	(6")	152mm x 900mm	Omega Charcoal
ZPF6O	(6")	152mm x 900mm	Other Colour#
ZPF775OB	(7.75")	195mm x 900mm	Omega Black
ZPF775C	(7.75")	195mm x 900mm	Omega Charcoal
ZPF775O	(7.75")	195mm x 900mm	Other Colour#

COLOURBOND FLUE 900mm LONG



CF10	(10")	254mm x 900mm
CF12	(12")	305mm x 900mm
CF13	(13")	330mm x 900mm
CF14	(14")	356mm x 900mm

Colourbond flue is made to order. Contact your nearest store to find out colours available.

FLEXIBLE STAINLESS STEEL FLUE PIPE



FF51	(5")	127mm x 1000mm
FF52	(5")	127mm x 2000mm
FF55	(5")	127mm x 5000mm



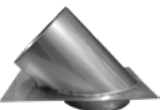
FF61	(6")	152mm x 1000mm
FF62	(6")	152mm x 2000mm
FF65	(6")	152mm x 5000mm

FLEXIBLE FLUE ADAPTORS



FFA5	(5")	127mm
FFA6	(6")	152mm

45° STAINLESS STEEL DIRECT OFFSET



SO	(6")	152mm
----	------	-------

FLUE REFLECTORS (WITH FIXING CLIPS)



FRS	Satin Polished Stainless Steel 1200mm L		
FRPOB	Zinc Anneal Painted 1200mm L	Omega Black	
FRPC	Zinc Anneal Painted 1200mm L	Omega Charcoal	
FRPO	Zinc Anneal Painted 1200mm L	Other Colour#	

STAINLESS STEEL T-PIECE (WITH CLEAN OUT CAP)



STPC6	(6")	152mm
-------	------	-------

PERFORATED FLUE - CLOVERLEAF



	PC90OB	900mm L x (7.75") 195mm	Omega Black
	PC90C	900mm L x (7.75") 195mm	Omega Charcoal
	PC90O	900mm L x (7.75") 195mm	Other Colour#
	PC909OB	900mm L x (9") 228mm	Omega Black
	PC909C	900mm L x (9") 228mm	Omega Charcoal
	PC909O	900mm L x (9") 228mm	Other Colour#
	PC90SOB	900mm L x (7.75") 195mm (with inbuilt shield)	Omega Black
	PC90SC	900mm L x (7.75") 195mm (with inbuilt shield)	Omega Charcoal
	PC90SO	900mm L x (7.75") 195mm (with inbuilt shield)	Other Colour#

PERFORATED FLUE - HERRINGBONE

	PH90OB	900mm L x (7.75") 195mm	Omega Black
	PH90C	900mm L x (7.75") 195mm	Omega Charcoal
	PH90O	900mm L x (7.75") 195mm	Other Colour#
	PH90SOB	900mm L x (7.75") 195mm (with inbuilt shield)	Omega Black
	PH90SC	900mm L x (7.75") 195mm (with inbuilt shield)	Omega Charcoal
	PH90SO	900mm L x (7.75") 195mm (with inbuilt shield)	Other Colour#

LOCATING RINGS

Specify hole size to suit Active Flue

	LR19OB	199mm Locating Ring	Omega Black
	LR19C	199mm Locating Ring	Omega Charcoal
	LR19O	199mm Locating Ring	Other Colour#
	LR23OB	235mm Locating Ring	Omega Black
	LR23C	235mm Locating Ring	Omega Charcoal
	LR23O	235mm Locating Ring	Other Colour#

SPUN COWL



SC4	(4")	102mm
SC45	(4.5")	114mm
SC5	(5")	127mm
SC6	(6")	152mm
SC7	(7")	178mm
SC8	(8")	203mm
SC10	(10")	254mm

WIND COWL - STAINLESS STEEL



WC4	(4")	102mm
WC45	(4.5")	114mm
WC5	(5")	127mm
WC6	(6")	152mm
WC7	(7")	178mm
WC8	(8")	203mm
WC9	(9")	228mm
WC10	(10")	254mm

VERTICAL DISCHARGE COWL - STAINLESS STEEL



VC45	(4.5")	114mm
VC5	(5")	127mm
VC6	(6")	152mm
VC7	(7")	178mm
VC8	(8")	203mm
VC9	(9")	228mm
VC10	(10")	254mm

OLD STYLE COWL - STAINLESS STEEL



OSC4	(4")	102mm
OSC45	(4.5")	114mm
OSC5	(5")	127mm
OSC6	(6")	152mm
OSC7	(7")	178mm
OSC8	(8")	203mm

GAS COWLS - AGA APPROVED GALVANISED



GC4	(4")	102mm
GC5	(5")	127mm
GC6	(6")	152mm
GC7	(7")	178mm
GC8	(8")	203mm

GAS HEATING



GRC4 4" Galvanised Reducing Cone



GLR4 4" Gas Locating Ring



GCR4 4" Gas Ceiling Ring

FLASHING CONE - STAINLESS STEEL



SFC4 (4") 102mm

SFC45 (4.5") 114mm

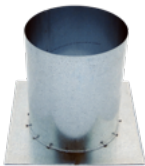
SFC5 (5") 127mm

SFC6 (6") 152mm

SFC7 (7") 178mm

SFC8 (8") 203mm

GALVANISED CHIMNEY PLATE



CP (10") 254mm

CHINAMANS HAT - GALVANISED WITH MESH



CH4 (4") 102mm

CH5 (5") 127mm

CH6 (6") 152mm

CH7 (7") 178mm

CH8 (8") 203mm

CH9 (9") 228mm

CH10 (10") 254mm

CH11 (11") 279mm

CH12 (12") 305mm

CHINAMANS HAT - STAINLESS STEEL WITH MESH



SCH4 (4") 102mm

SCH5 (5") 127mm

SCH6 (6") 152mm

SCH7 (7") 178mm

SCH8 (8") 203mm

SCH10 (10") 254mm

	PIPE SIZE (IMPERIAL)	PIPE SIZE (METRIC)	BASE SIZE
AQUASEAL - EPDM black certified for installation to BAL 12.5 rated roof/wall systems			
AMB	⅛"-1"	3-25mm	80x80mm
A1B	⅙"-2"	5-50mm	120x120mm
A2B	1"-2¾"	25-70mm	163x163mm
A3B	2"-4"	50-100mm	210x210mm
A4B	3½"-6"	90-150mm	260x260mm
A5B	5"-8"	125-200mm	313x313mm
A6B	6"-10"	150-250mm	370x370mm
A7B	8"-11½"	195-300mm	440x440mm
A8B	9"-15"	230-380mm	540x600mm
A9B	12½"-19⅓"	315-500mm	650x720mm
A10B	15¾"-29½"	400-750mm	965x995mm



ALUMINIUM



99.9% Pure Grade. Drinking water safe. Can paint to match roof colour with acrylic house paint.

A7BT	7"-10⅓"	180-270mm	800x600mm
------	---------	-----------	-----------

ENVIRO LEAD

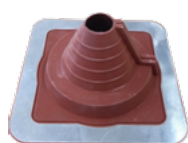


Acrylic coating helps prevent lead leaching. Can paint to match roof colour with acrylic house paint.

A7BTL	6"-11⅝"	150-300mm	850x600mm
-------	---------	-----------	-----------

Black EPDM will withstand constant temperatures of -40°C (-40°F) to 115°C (239°F).
Pipe size is based on a 25° roof pitch. Sizing will be slightly reduced on steep roof pitches.

AQUASEAL - Silicone red certified for installation to BAL 29 rated roof/wall systems

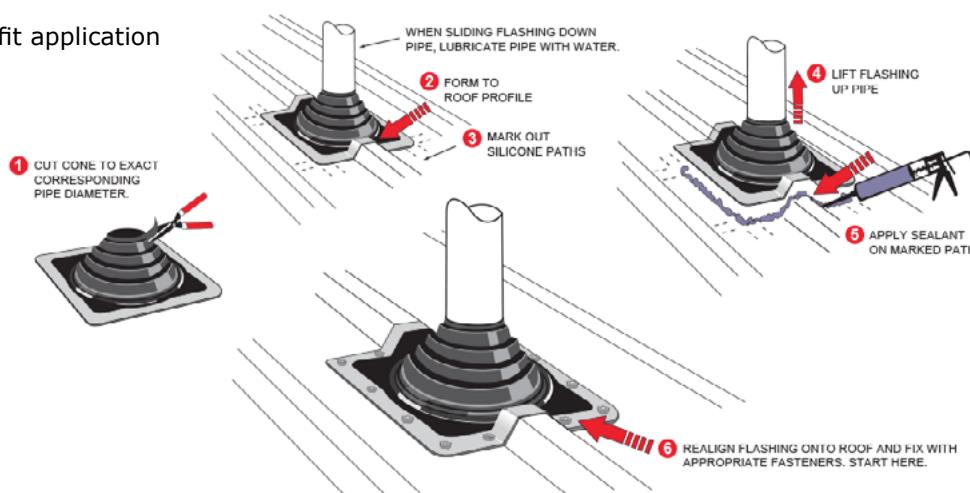


A4R	3½"-6"	90-150mm	260x260mm
A5R	5"-8"	125-200mm	313x313mm
A6R	6"-10"	150-250mm	370x370mm
A7R	8"-11⅝"	195-300mm	440x440mm

Red silicone will withstand constant temperatures of -50°C (-58°F) to 200°C (392°F)
Pipe size is based on a 25° roof pitch. Sizing will be slightly reduced on steep roof pitches.

Features

- » Suitable for both standard and retrofit application
- » Wraps around existing pipes
- » Suitable for repairs
- » Polymer is Ozone and UV resistant
- » 25 year warranty
- » Australian Made & Owned



STAINLESS STEEL BENDS 45°



SB454	(4")	102mm
SB4545	(4.5")	114mm
SB455	(5")	127mm
SB456	(6")	152mm
SB456L	(6")	152mm Extra Long
SB457	(7")	178mm
SB458	(8")	203mm
SB459	(9")	228mm
SB4510	(10")	254mm
SB4512	(12")	305mm

STAINLESS STEEL BENDS 45° - PAINTED



SB4560B	(6")	152mm	Omega Black
SB456C	(6")	152mm	Omega Charcoal
SB456O	(6")	152mm	Other Colour#



SB456LOB	(6")	152mm Extra Long	Omega Black
SB456LC	(6")	152mm Extra Long	Omega Charcoal
SB456LO	(6")	152mm Extra Long	Other Colour#

STAINLESS STEEL BENDS 90°



SB904	(4")	102mm
SB9045	(4.5")	114mm
SB905	(5")	127mm
SB906	(6")	152mm
SB908	(8")	203mm

GALVANISED BENDS 45°



GB454	(4")	102mm
GB455	(5")	127mm
GB456	(6")	152mm
GB457	(7")	178mm
GB458	(8")	203mm
GB459	(9")	228mm
GB4510	(10")	254mm
GB4511	(11")	279mm
GB4512	(12")	305mm
GB4514	(14")	356mm
GB4516	(16")	406mm

GALVANISED BENDS 90°



GB904	(4")	102mm
GB905	(5")	127mm
GB906	(6")	152mm
GB908	(8")	203mm
GB9010	(10")	254mm
GB9012	(12")	305mm



Bends, Fascias & Penetration Kits

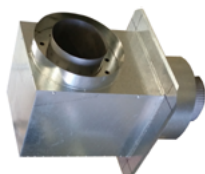
special paint charge 'PC' may apply (see below)

TELESCOPIC BEND 30°



SB30 (6") 152mm

OUTER HEATER BOX



OHB6 Outer Heater Box to suit 6"

FASCIA BLANK OFF PANELS



BPPOB Painted Omega Black

BPPC Painted Omega Charcoal

BPPO Painted Other Colour#



BFPOB Outside Folded and Painted Omega Black

BFPC Outside Folded and Painted Omega Charcoal

BFPO Outside Folded and Painted Other Colour#

Up to 1200 x 1200 (maximum size) 1.2mm Z/A

PENETRATION KIT – WALL - 900mm LONG



WPK100B (10") 254mm Outer Omega Black

WPK10C (10") 254mm Outer Omega Charcoal

WPK100 (10") 254mm Outer Other Colour#

PENETRATION KIT – FLOOR - 700mm LONG



FPK100B (10") 254mm Outer Omega Black

FPK10C (10") 254mm Outer Omega Charcoal

FPK100 (10") 254mm Outer Other Colour#

Note: Specify hole size to suit Active Flue or Perforated Flue

IMPORTANT !

PAINT CHANGE OVER CHARGE (PC)

Standard paint colours are Omega Black & Charcoal. Painted items ordered in other colours (i.e., leather brown) incur a charge to changeover the paint colour. This charge is to be applied on codes for painted items that finish in an 'O' for other colour and are marked with a # symbol. The charge is to cover the cost of changing over the paint colour to an alternative paint colour. Regardless of the number of items being painted this charge is only applied once to changeover the colour in the gun.

PAINT CHARGE HEATING (PCH)


The charge to paint an item that is normally unpainted. Cost will depend on the size of the item being painted.





CEILING BOX & FLANGE

	CB100B	(10")	254mm Outer	Omega Black
	CB10C	(10")	254mm Outer	Omega Charcoal
	CB100	(10")	254mm Outer	Other Colour [#]
	CB120B	(12")	305mm Outer	Omega Black
	CB12C	(12")	305mm Outer	Omega Charcoal
	CB120	(12")	305mm Outer	Other Colour [#]
	CB130B	(13")	330mm Outer	Omega Black
	CB13C	(13")	330mm Outer	Omega Charcoal
	CB130	(13")	330mm Outer	Other Colour
	CB140B	(14")	356mm Outer	Omega Black
	CB14C	(14")	356mm Outer	Omega Charcoal
	CB140	(14")	356mm Outer	Other Colour



CEILING BOX ONLY

	CBO100B	(10")	254mm Outer -500mm L	Omega Black
	CBO10C	(10")	254mm Outer -500mm L	Omega Charcoal
	CBO100	(10")	254mm Outer -500mm L	Other Colour [#]
	CBO120B	(12")	305mm Outer -500mm L	Omega Black
	CBO12C	(12")	305mm Outer -500mm L	Omega Charcoal
	CBO120	(12")	305mm Outer -500mm L	Other Colour [#]
<i>SHED TYPE</i>	CBS10	(10")	254mm Outer -900mm L	Unpainted



CEILING BOX FLANGE ONLY

	CBF100B	Suit (10")	254mm Outer	Omega Black
	CBF10C	Suit (10")	254mm Outer	Omega Charcoal
	CBF100	Suit (10")	254mm Outer	Other Colour [#]
	CBF120B	Suit (12")	305mm Outer	Omega Black
	CBF12C	Suit (12")	305mm Outer	Omega Charcoal
	CBF120	Suit (12")	305mm Outer	Other Colour [#]

CEILING BOX FLANGE (TO SUIT PITCHED CEILING UP TO 45°)

	CBFP100B	(10")	254mm Outer	Omega Black
	CBFP10C	(10")	254mm Outer	Omega Charcoal
	CBFP100	(10")	254mm Outer	Other Colour [#]
	CBFP120B	(12")	305mm Outer	Omega Black
	CBFP12C	(12")	305mm Outer	Omega Charcoal
	CBFP120	(12")	305mm Outer	Other Colour [#]

CEILING BOX END CAP

	CBEC100B	Suit (10")	254mm Outer	Omega Black
	CBEC10C	Suit (10")	254mm Outer	Omega Charcoal
	CBEC100	Suit (10")	254mm Outer	Other Colour [#]
	CBEC120B	Suit (12")	305mm Outer	Omega Black
	CBEC12C	Suit (12")	305mm Outer	Omega Charcoal
	CBEC120	Suit (12")	305mm Outer	Other Colour [#]

PAINT

	POBL	Paint Can - 400gm (Omega)	Black
	POCH	Paint Can - 400gm (Omega)	Charcoal
	PALM	Paint Can - 299ml (Stove Bright)	Almond
	PCHA	Paint Can - 299ml (Stove Bright)	Charcoal
	PFBL	Paint Can - 299ml (Stove Bright)	Black (Flat)
	PSBL	Paint Can - 299ml (Stove Bright)	Black (Satin)
	PMBL	Paint Can - 299ml (Stove Bright)	Black (Metallic)
	PGFB	Paint Can - 299ml (Stove Bright)	Brown (Golden Fire)
	PHGB	Paint Can - 299ml (Stove Bright)	Brown (Honey Glo)
	PMBR	Paint Can - 299ml (Stove Bright)	Brown (Metallic)
	PPEW	Paint Can - 299ml (Stove Bright)	Pewter
	PD4MB	Paint Drum - 4 Litres	Black (Metallic)
	PD4C	Paint Drum - 4 Litres	Charcoal
	HTS	High Temperature Sealant, 10.1oz cartridge	

DOOR FRAMES - STAINLESS STEEL

ST10	Small Turbo 10
	Size: 325 x 300mm with 302 x 277mm opening Overall Size (including rope recess): 345 x 320mm
ST12	Large Turbo 12
	Size: 420 x 300mm with 395 x 277mm opening Overall Size (including rope recess): 440 x 320mm

Other frames made to order

FIRE BRICKS



HFB25	230mm x 115mm x 25mm
HFB40	230mm x 115mm x 40mm

ANGLE SUPPORT BRACKETS



RA7	25 x 25 x 750mm Long 1.0mm
RA18	25 x 25 x 1800mm Long 1.0mm

REDUCERS - STAINLESS STEEL



SR5	(5") 127mm-nominated ∅
SR6	(6") 152mm-nominated ∅
SR7	(7") 178mm-nominated ∅
SR8	(8") 203mm-nominated ∅

Note: Nominate diameter of small end & which end to crimp

REDUCERS - GALVANISED



GR5	(5") 127mm-nominated ∅
GR6	(6") 152mm-nominated ∅
GR7	(7") 178mm-nominated ∅
GR8	(8") 203mm-nominated ∅
GR10	(10") 254mm-nominated ∅

Note: Nominate diameter of small end & which end to crimp



Warm Air Transfer (WATS) Kits

WARM AIR TRANSFER KITS

WATS1	Transfer Heat to 1 Room - 200° Fan
WATS2	Transfer Heat to 2 Rooms - 200° Fan
WATS3	Transfer Heat to 3 Rooms - 200° Fan
WATS3250	Transfer Heat to 3 Rooms - 250° Fan
WATS4250	Transfer Heat to 4 Rooms - 250° Fan

WATS1 - TRANSFER TO 1 ROOM

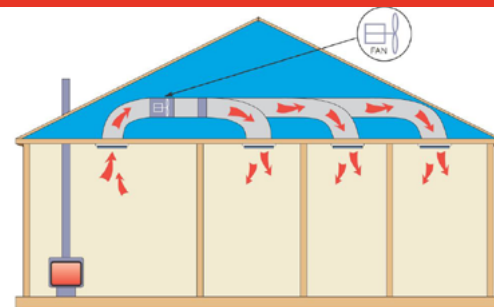
- 1 WATS Fan 200° 2 Pole
- 2 200° Transfer Duct (3m)
- 2 200° Direct Jet
- 1 PVC Joining Tape

WATS2 - TRANSFER TO 2 ROOMS

- 1 WATS Fan 200° 2 Pole
- 1 200° Transfer Duct (3m)
- 2 150° Transfer Duct (3m)
- 1 200-150-150 Plastic Y
- 2 150° Direct Jet
- 1 200° Direct Jet
- 1 PVC Joining Tape

WATS3 - TRANSFER TO 3 ROOMS

- 1 WATS Fan 200° 2 Pole
- 2 200° Transfer Duct (3m)
- 3 150° Transfer Duct (3m)
- 1 200-200-150 Plastic Y
- 1 200-150-150 Plastic Y
- 3 150° Direct Jet
- 1 200° Direct Jet
- 1 PVC Joining Tape



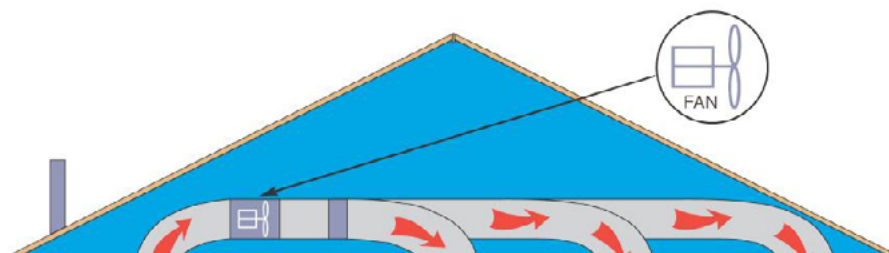
Transfer **warm** or **cold** air to one room or throughout the house.

WATS3250 - TRANSFER TO 3 ROOMS

- 1 Fan 250° 2 Pole
- 2 250° Transfer Duct (3m)
- 3 200° Transfer Duct (3m)
- 1 250-250-200 Plastic Y
- 1 250-200-200 Plastic Y
- 3 200° Direct Jet
- 1 250° Direct Jet
- 2 PVC Joining Tape

WATS4250 - TRANSFER TO 4 ROOMS

- 1 Fan 250° 2 Pole
- 3 250° Transfer Duct (3m)
- 4 200° Transfer Duct (3m)
- 1 250-250-250 Plastic Y
- 2 250-200-200 Plastic Y
- 4 200° Direct Jet
- 1 250° Direct Jet
- 3 PVC Joining Tape



TRANSFER WARM AIR FROM ONE ROOM TO ANOTHER OR UP TO 4 ROOMS

FLEXIBLE DUCT - R1 (3 METRE)



PF31150	150° Transfer Duct 3 Metre
PF31200	200° Transfer Duct 3 Metre
PF31250	250° Transfer Duct 3 Metre
PF31300	300° Transfer Duct 3 Metre

FLEXIBLE DUCT - R1 (6 METRE)



PF61150	150° Transfer Duct 6 Metre
PF61200	200° Transfer Duct 6 Metre
PF61250	250° Transfer Duct 6 Metre
PF61300	300° Transfer Duct 6 Metre

JOINERS



J15	150° Joiners
J20	200° Joiners
J25	250° Joiners
J30	300° Joiners

DIRECT JET



DJ150	150° Direct Jet & Damper
DJ200	200° Direct Jet & Damper
DJ250	250° Direct Jet & Damper

CONE DIFFUSER



RCD30	300° Cone Diffuser (Intake)
-------	-----------------------------

EZY Y® BRANCH



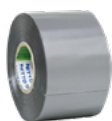
EI20	Insulated 200/150/150
EI25	Insulated 250/200-150/200-150
EI30	Insulated 300/250-200/250-200
EI35	Insulated 350/300-250/300-250
EY20	Plain 200/200/200
EY25	Plain 250/250/250

PLASTIC REDUCERS



PR2015	Reducer 200 x 150
PR2520	Reducer 250 x 200

TAPE



TAPEJ	PVC Joining Tape
-------	------------------

FANS



FAN152	150° (80 L/S @ PA 20) (45 L/S @ PA 60)
FAN202	200° (215 L/S @ PA 20) (100 L/S @ PA 70)
FAN252	250° (420 L/S @ PA 20) (200 L/S @ PA 120)
FAN302	300° (700 L/S @ PA 20) (400 L/S @ PA 160)

THERMOSTAT / SWITCH



VSC	Variable Speed VA2.0
-----	----------------------



SRAA31	Thermostat On/Off switch
--------	--------------------------

IMPORTANT - IT IS STRONGLY RECOMMENDED THAT INSTALLATIONS ONLY BE CONDUCTED BY A QUALIFIED WOOD HEATING INSTALLER

FLUE KIT INSTALLATION GUIDE

There are three different styles of Flue Kits available, Stainless Steel, Perforated Stainless Steel and Painted Stainless Steel. See pages 1 and 2 for prices and kit contents.

Follow the instructions through to step 12 then continue with the instructions to suit your style of kit.

INSTRUCTIONS

1. Locate the Heater in accordance with Australian New Zealand Standard AS/NZS 2918:2018 and as per manufacturer recommendations.
2. Position Heater to ensure Flue Pipe is clear of all obstructions. To mark centre on ceiling use a Plumb Line to centre the Flue Pipe.
3. Cut hole in ceiling to allow a minimum clearance of 25mm all the way around the Ceiling Box.
4. Cut hole in roof to allow a minimum clearance of 25mm all the way around the outer Casing.
5. Fix Angle Supports to the ceiling timbers with a distance between the Angles to suit the Ceiling Box.
6. Fix Ceiling Box into position with crimp end facing towards the roof. Ceiling Box must penetrate a minimum distance of 300mm into the room or 150mm into the room if the heater output is less than 25kW.
7. Push Ceiling Flange over the Ceiling Box making sure it is level to the ceiling and fix straps into the Ceiling Box.
8. Fit the crimped Galva bond Outer Casing over the end of the Ceiling Box, with crimp facing up.
9. Fit the 2 Inner Flues together. On both ends cut 4 x 25mm tags and bend, to face up.
10. Lower the Inner Casing down into the Ceiling Box. The end with 8 tabs bent, to face up.
11. Fit the remaining Outer Casing into the Flue system.
12. Flash around and seal the Outer Casing where it penetrates the outside roof. Ensure that the Casing is suitably braced.
13. Follow the instructions to suit your style of kit.
 - STAINLESS STEEL FLUE KIT - Join the lengths of Stainless Steel Flue together, crimped end must always face down.
 - PERFORATED STAINLESS STEEL KIT - Place the Locating Ring over the Flue Collar with edge facing up. Join Stainless Steel Flue together, crimped end must always face down. Perforated Flue must be fitted at the same time with crimp facing up. Slide Perforated Flue through the Ceiling Box lowering the base into the Locating Ring.
 - PAINTED STAINLESS STEEL KIT - Join the lengths of 3 x Painted Stainless Steel Flue together, crimped end must always face down. Fit the 2 x Unpainted Stainless Steel Flue to the top length of Painted Flue.
14. Make sure that crimped end or smaller end of flue fits into the heater. All joints between sections of flue pipe shall be push fitted so the upper section enters the lower section the crimped section must face down. The sections shall be secured by at least 3 fasteners spaced approximately equally around the joint so as to prevent unintentional or accidental separation.
15. The top length of the Flue should finish ensuring that it fits into the Cowl Stem by 25mm. Active Flue or Outer Casing will required cutting for this to happen. Flue height must comply with Australian New Zealand Standard AS/NZS 2918:2018.
16. Inner casing must finish just below the outer casing and all crimped sections must face up to prevent outside water entering the flue system.
17. Cut 4 x 25mm tags in the top length of Outer Casing to allow the Flue System to ventilate.
18. Fit cowl over the Flue and Casing and secure tags.

IMPORTANT - IT IS STRONGLY RECOMMENDED THAT INSTALLATIONS ONLY BE CONDUCTED BY A QUALIFIED WOOD HEATING INSTALLER

FLUE KIT INSTALLATION GUIDE cont..

ROOF FLASHING

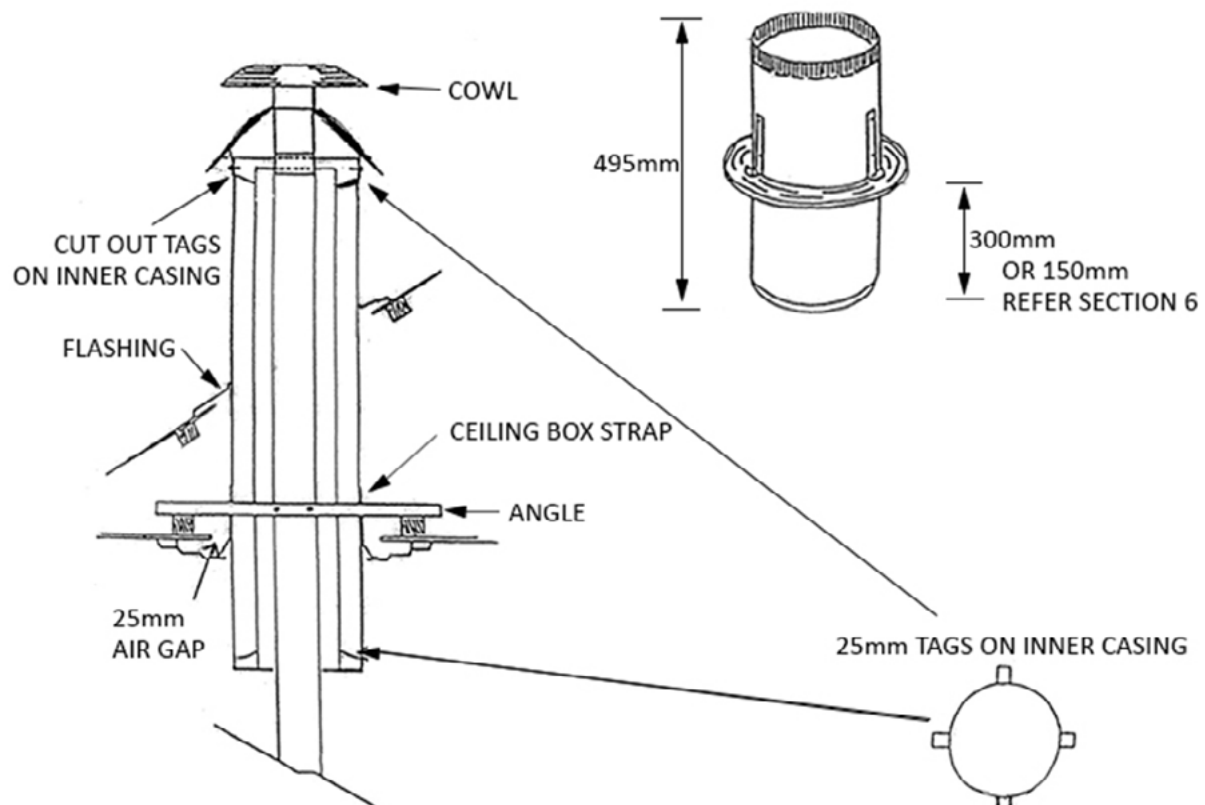
- When flashing your Flue System on any type of metal roof it is recommended that you use a rubber Aquaseal or Dektite.
- On tiled roofs lead or other suitable flashing should be used.

BEFORE YOUR FIRST FIRE

- All exposed Stainless Steel Flue should be cleaned with a Stainless Steel non-abrasive cleaner. This is important as any marks left on the Flue will not be able to be removed afterwards.
- When lighting your first fire test the Flue System with a few sheets of rolled up newspaper to make sure the Flue is clear and to cure all painted surfaces. Continue with a small fire until this has been achieved.

WARNINGS

- Please note that this Installation Guide may not apply in all situations. Some houses have high roofs therefore extra Flue may be required.
- Before commencing installation, it is recommended that you check with your local council regarding any regulations which may apply to installations of this type.
- If installation of Flue Kit and Heater do not comply with Australian New Zealand Standard AS/ NZS 2918:2018 it would not comply with the Australian Building Code.
- Installations that do not comply are considered unsafe and are a fire hazard. It is extremely dangerous to install a Flue Kit that does not comply with the Australian Standard.
- It is recommended that a professional Chimney Sweeper checks your Flue Pipe regularly for Soot build up and also to conduct general maintenance.



IMPORTANT - IT IS STRONGLY RECOMMENDED THAT INSTALLATIONS ONLY BE CONDUCTED BY A QUALIFIED WOOD HEATING INSTALLER

CHIMNEY KIT INSTALLATION GUIDE

INSTRUCTIONS

1. Locate the Heater in accordance with the Australian Standards AS2918:2018 and as per manufacturer recommendations.
2. Join lengths of Stainless Steel Flue together, crimped end must always face down. Pass the flue Pipe up or down Chimney, whichever is easier, Crimped end first. You may find it easier to join lengths of Flue together first.
3. Fit Chimney Plate to the top of Chimney. Cement over the base plate. Angle the cement to allow water runoff.
4. The top length of Flue should finish to ensure that it fits onto the cowl stem by 25mm. Active Flue will require cutting for this to happen.
5. Cut 4 x 25mm tags in the Chimney Plate to allow the Flue System to Ventilate.
6. Fit Cowl over the Flue and Chimney Plate and secure tags.

WARNINGS

- Please note that this Installation Guide may not apply in all situations. Some houses have higher roofs, therefore extra Flue may be required.
- Before commencing installation, it is recommended that you check with your local council regarding any regulations, which may apply to the installation of this type. If the installation does not comply with Australian Standard AS2918:2018, it would not comply with Australian Building Code.
- It is recommended that a professional Chimney Sweeper checks your Flue regularly for Soot build up and also to conduct general maintenance.
- When lighting your first fire, test the system with a few sheets rolled up newspaper to make sure the Flue is clear and to cure all painted surfaces. Continue with a small fire until this has been achieved.



CONTENTS

- 4 x Stainless Steel Flue 900mm long
- 1 x Stainless Steel Flue 450mm
- 1 x Galvanised Chimney Plate
- 1 x Spun Cowl
- 1 x Installation Guide

AIR DIFFUSION AGENCIES - TERMS AND CONDITIONS OF SALE

1. DEFINITIONS

- 1.1. The Supplier is AIR DIFFUSION AGENCIES PTY. LIMITED (ACN: 008 267 221). The Customer is the party or any person acting on behalf of and with the authority of the Customer that the Order is provided for.
- 1.2. The Guarantor is the person(s), or entity, who agrees to be liable for the debts of the Customer.
- 1.3. The Order shall be defined as any request for the provision of Goods and/or Services by the Customer with the Supplier which has been accepted by the Supplier.
- 1.4. The Goods are the air conditioning goods and/or related products provided by the Supplier.
- 1.5. The Services are all the delivery and/or supply of Goods by the Supplier, including any advice or recommendations.
- 1.6. The Price is the amount invoiced for Goods supplied.
- 1.7. Indirect, Special or Consequential loss or damage includes i) any loss of income profit or business; ii) any loss of good will or reputation; iii) any loss of value of intellectual property.
- 1.8. Invoices include invoices for Goods supplied.
- 1.9. GST refers to Goods and Services Tax under the *Goods and Services Act 1999* ("GST Act") and the terms used herein have meanings contained within the GST Act.
- 1.10. Major failure refers to Major failure as defined under the *Competition and Consumer Act 2010* and the *Fair Trading Acts* in each of the States and Territories of Australia.
- 1.11. Security interest as defined in Section 12 of the *Personal Property Securities Act 2009* (Cth).
- 1.12. "Security Agreement", "Commingled Goods", "Collateral", "Financing Statement", "Financing Change Statement" is defined under Section 10 of the *Personal Property Securities Act 2009* (Cth).

2. GENERAL

- 2.1. These Terms and Conditions together with the Supplier's written or verbal quotation and the Supplier's Credit Application Form forms this Agreement.
- 2.2. Any Order requested by the Customer is deemed to be an Order incorporating these Terms and Conditions and may not be varied unless expressly agreed to by the parties in writing. In the event that an inconsistency exists and/or arises between these terms and the Order it is acknowledged between the parties that these Terms and Conditions will prevail.
- 2.3. No subsequent correspondence or document or discussion shall modify or otherwise vary these Terms and Conditions unless such variation is in writing and signed by the Supplier.
- 2.4. The Terms and Conditions are binding on the Customer, his heirs, assignees, executors, trustees and where applicable, any liquidator, receiver or administrator.
- 2.5. In these Terms and Conditions, the singular shall include the plural, the masculine shall include feminine and neuter and words importing persons shall apply to corporations.
- 2.6. Where more than one Customer completes this Agreement each shall be liable jointly and severally.
- 2.7. If any provision of these Terms and Conditions shall be invalid, void, illegal or unenforceable the validity, existence, legality and enforceability of the remaining provisions shall not be affected, prejudiced or impaired and the offending provision shall be deemed as severed from these Terms and Conditions.
- 2.8. The Supplier may license or sub-contract all or any part of its rights and obligations without the Customer's consent but the Supplier acknowledges that it remains at all times liable to the Customer.
- 2.9. The failure by the parties to enforce any provision of these Terms and Conditions shall not be treated as a waiver of that provision, nor shall it affect the parties' right to subsequently enforce that provision.
- 2.10. The Customer acknowledges that the Supplier may detail these Terms and Conditions on its website.

3. PLACEMENT OF ORDERS

- 3.1. Orders placed by the Customer with the Supplier will be considered valid when placing the Order in writing and/or verbally
- 3.2. Any written Quotation given by the Supplier shall expire thirty (30) days after the date of the written quotation. Quotations may also be provided to the Customer by verbal communication over the telephone.
- 3.3. All prices are based on taxes and statutory charges current at the time of the Quotation. Should these vary during the period from the date of the Quotation to the date of the invoice, the difference will become the responsibility of the Customer and the Customer will be invoiced for the extra charge by the Supplier.

4. PRICE

- 4.1. GST will be charged on the Goods and Services provided by the Supplier that attract GST at the applicable rate
- 4.2. The Supplier reserves the right to change the Price to the Order in the event of a variation which was previously unknown or unforeseen by the parties at the time the Order was placed, and notice will be provided in writing by the Supplier within a reasonable time.
- 4.3. At the Supplier's sole discretion the Price shall be either:

- 4.3.1. As detailed on invoices provided by the Supplier to the Customer in respect of Goods and/or Services supplied; or
- 4.3.2. The Supplier quoted Price as for the Order (subject to Clause 4.2)

5. SUPPLY AND DELIVERY OF GOODS

- 5.1. At any time before payment is made by the Customer, the Supplier reserves their right to:
 - 5.1.1. Decline requests for any Goods requested by the Customer.
 - 5.1.2. Cancel or postpone the delivery of Goods at their discretion.
- 5.2. Delivery of the Goods shall be deemed to be complete when the Goods are collected by the Customer or are delivered to the Customer or to the carrier as nominated by the Supplier and/or Customer.
- 5.3. If the Customer fails to make all arrangements necessary to take delivery of the Goods the Customer shall, at the discretion of the Supplier, be liable for a \$33.00 Non Delivery Fee and the Supplier shall be entitled, also at its discretion, to charge a reasonable fee for redelivery and storage.
- 5.4. Unless specified by the Supplier to the contrary in the Order, the Supplier does not warrant that it will be capable of providing the Goods at specific times requested by the Customer during the term of this Agreement.
- 5.5. Subject to otherwise complying with its obligations under this Agreement, the Supplier shall exercise its independent discretion as to its most appropriate and effective manner of providing the Goods and of satisfying the Customer's expectations of those Goods.
- 5.6. In the discharge of its duties, the Supplier shall comply with all reasonable directions of the Customer as to the nature and scope of the Goods to be provided.
- 5.7. Nothing in the above clause shall affect the Supplier's right to exercise its own judgment and to utilise its skills as it considers most appropriate in order to achieve compliance with the said resolutions, regulations and directions or otherwise with its obligations under this Agreement.
- 5.8. The Supplier may agree to provide, on request from the Customer, additional Goods not included or specifically excluded in the Quotation/Order. In this event, the Supplier shall be entitled to make an additional charge. Additional Goods includes, but is not limited to, alterations, amendments, and any additional visits by the Supplier after provision of the Goods at the request of the Customer.

6. PAYMENT AND CREDIT POLICY

- 6.1. The Customer must make full payment of the Price within thirty (30) days from the date of issue of invoice(s) for the Goods and/or Services.
Discounts
- 6.2. The Customer will be entitled to a discount on the Price at the rate as may be agreed from time to time by the Supplier and the Customer if payment is made within thirty (30) days from the date of issue of invoice(s) for the Goods and Services.
- 6.3. In the event of a default the customer will not be entitled to any discounts and shall pay the full Price as listed on the original invoice(s).

7. DISHONOUR OF CHEQUE

- 7.1. If any cheque issued by the Customer or by any third party in payment of the Price is dishonoured:
 - 7.1.1. The Supplier may refuse to supply any further Goods until satisfactory payment is Received in full, including bank fees and charges;
 - 7.1.2. The Supplier is entitled to treat the dishonour of the Customer's cheque as a repudiation of this Agreement and to elect between terminating this Agreement or affirming this Agreement, and in each case claiming and recovering compensation for loss or damage suffered from the Customer.
 - 7.1.3. The Customer may be liable for a dishonoured cheque fee of \$40.00.

8. DEFAULT

- 8.1. Invoices issued by the Supplier shall be due and payable upon the provision of Goods and/or services for Non-Account Customers, and invoices issued by the Supplier shall be due and payable within thirty (30) days of the date of issue for Account Customers ("Default Date") depending on terms agreed with the Supplier. Without prejudice to any other rights of the Supplier, the Customer may be charged account keeping fees of \$25.00 monthly on any payment in arrears.
- 8.2. If the Supplier does not receive the Outstanding Balance for the Price on or before the Default Date, the Supplier may, without prejudice to any other remedy it may have, forward the Customer's outstanding account to a debt collection agency for further action. The Customer acknowledges and agrees that:
 - 8.2.1. After the Default Date, the Outstanding Balance shall include, but not limited to, all applicable fees and charges under this Agreement;
 - 8.2.2. The Supplier may, in its discretion, calculate interest at the rate of five per centum (5%) per annum for all monies due by Customer to the Supplier.

- 8.2.3. In the event of the Customer being in default of his obligation to pay and the overdue account is then referred to a debt collection agency, and/or law firm for collection the Customer shall be liable for the recovery costs incurred and if the agency charges commission on a contingency basis the Customer shall be liable to pay as a liquidated debt, the commission payable by the Supplier to the agency, fixed at the rate charged by the agency from time to time as if the agency has achieved one hundred per cent recovery and the following formula shall apply:

$$\text{Commission} = \frac{\text{Original Debt} \times 100}{100 - \text{Commission \% charged by the agency (including GST)}}$$

- 8.2.4. In the event the agency is Prushka Fast Debt Recovery the applicable commission rate for the amount unpaid is as detailed on www.prushka.com.au.
- 8.2.5. In the event where the Supplier or the Supplier's agency refers the overdue account to a lawyer the Customer shall also pay as a liquidated debt the charges reasonably made or claimed by the lawyer on the indemnity basis.

9. RISK AND LIABILITY

- 9.1. The Customer will ensure when placing Orders that there is sufficient information to enable the Supplier to execute the Order.
- 9.2. The Supplier takes no responsibility if the specifications provided by the customer are wrong or inaccurate and the Customer will be liable in that event for the expenses incurred by the Supplier for any work required to rectify the Order.
- 9.3. The Customer is responsible for ensuring that the Supplier is made aware of any special requirements pertaining to the Order and the Supplier relies upon the integrity of the information supplied to it.
- 9.4. The Supplier takes no responsibility and will not be liable for any damages or costs resulting in the Goods being faulty as a consequence of insufficient information provided by the Customer.
- 9.5. The Supplier takes no responsibility for representations made in relation to the Goods or any delay in the delivery of the Goods made by a third party or third party manufacturer which was organised by the Customer.
- 9.6. The Customer acknowledges that the Supplier shall not be liable for and the Customer releases the Supplier from any loss incurred as a result of delay or failure to provide the Goods and/or services or to observe any of these conditions due to an event of force majeure, being any cause or circumstance beyond the Supplier's reasonable control.
- 9.7. The Supplier does not represent that it will carry out any Services and/or provide and/or deliver any Goods unless it is included in the Quote.
- 9.8. Subject to Clause 10.1 and 10.2 the Customer accepts risk in relation to the Goods when the Goods pass to his care and/or control.

10. WARRANTY

- 10.1. The Supplier warrants that the rights and remedies to the Customer in this Agreement for warranty against defects are in addition to other rights and remedies of the Customer under any applicable Law in relation to the goods and services to which the warranty relates.
- 10.2. The Supplier does not purport to restrict, modify or exclude any liability that cannot be excluded under the *Competition and Consumer Act 2010* or the *Fair Trading Acts* in each of the States and Territories of Australia
Warranty for Services
- 10.3. The Supplier warrants that if any defect in any Service provided by the Supplier becomes apparent and is reported to the Supplier preferably within (14) days of the provision of the Services then the Supplier will (at the Supplier's sole discretion) remedy the defective Service.
- 10.4. To the extent permitted by law, the Supplier's liability in respect of defective services will be limited to:
 - 10.4.1. The re-supply of the Service; or
 - 10.4.2. The payment of the cost of having the Services supplied again; or
 - 10.4.3. The refund of the Price paid by the Customer in respect of the Service.
- 10.5. In respect of all claims the Supplier shall not be liable to compensate the Customer for any reasonable delay in remedying the defective Services or in assessing the Customer's claim. The Customer warrants that it will use its best endeavors to assist the Supplier with identifying the nature of the defective Service claim.
Warranty for Goods
- 10.6. The warranty for Goods supplied shall be the current warranty provided by the manufacturer of the Goods. The Supplier shall not be bound by nor be responsible for any term, condition, representation or warranty other than that which is given by the manufacturer of the Goods.
- 10.7. The Customer continues to be responsible for all amounts owing to the Supplier in the event that any Goods are supplied on the basis that a manufacturer's warranty is in place and it subsequently becomes known to the parties that the warranty is void or inapplicable.

AIR DIFFUSION AGENCIES - TERMS AND CONDITIONS OF SALE

- 10.8. For Goods manufactured by the Supplier, the Supplier warrants:
Our goods come with guarantees that cannot be excluded under the Australian Consumer Law. You are entitled to a replacement or refund for a major failure and compensation for any other reasonably foreseeable loss or damage. You are also entitled to have the Goods repaired or replace if the Goods fail to be of acceptable quality and the failure does not amount to a major failure.
- 10.9. If the Goods and Services are not of a kind ordinarily acquired for personal, domestic or household use or consumption, the Supplier's liability for a consumer guarantee under the Australian Consumer Law in relation to those Goods and Services is limited to, at the discretion of the Supplier:
- 10.9.1. The resupply of the Goods and Services;
- 10.9.2. The payment of the cost of providing the Goods and Services again.
- Claims made under Warranty**
- 10.10. Subject to clause 11.2 of this Agreement claims for warranty should be made in one of the following ways:
- 10.10.1. The Customer must send the claim in writing together with proof of purchase to the Supplier as stated in clause 1.1 of this Agreement;
- 10.10.2. The Customer must email the claim together with the proof of purchase to the Supplier at accounts@airdiffusion.com.au
- 10.10.3. The Customer must contact the Supplier on the Supplier's business number 08 8307 2310.
- 10.11. Goods where a claim is made are to be returned to the Supplier or are to be left in the state and conditions in which they were delivered until such time as the Supplier or its Agent has inspected the Goods. Such inspection is to be carried out within a reasonable time after notification.
- 11. RETENTION OF TITLE**
- 11.1. While the risk in Goods shall pass on delivery and/or supply (including all risks associated with unloading), legal and equitable title in the Goods shall remain with the Supplier until full payment of all Goods supplied by the Supplier to the Customer is made. Pending such payment the Customer:
- 11.1.1. Shall hold the Goods as Bailee for the Supplier and shall return the Goods to the Supplier if so requested.
- 11.1.2. Agrees to hold the Goods at the Customer's own risk and is liable to compensate the Supplier for all loss or damage sustained to the Goods whilst they are in the Customer's possession.
- 11.1.3. The Customer should store the Goods separately and in such a manner that it is clearly identified as the property of the Supplier and keep the Goods insured to full replacement value.
- 11.1.4. The Customer must not allow any person to have or acquire security interest in the Goods whilst the Goods are in the Customer's possession.
- 11.1.5. The Customer may sell and/or use the Goods in the ordinary course of business.
- 11.1.6. If the Goods are resold before all monies are paid to the Supplier, the Customer shall hold the proceeds of sale in a separate identifiable account on trust for the Supplier and promptly account the Supplier for those proceeds in payment of the Price for the Goods.
- 11.2. The Supplier is authorised to enter the Premises or the premises where the Customer stores the Goods without liability for trespass or any resulting damage in retaking possession of the Goods until the accounts owed to the Supplier by the Customer are fully paid.
- 11.3. Notwithstanding the provisions above, the Supplier shall be entitled to issue legal proceedings to recover the Price of the Goods.
- 12. PERSONAL PROPERTY SECURITIES ACT 2009 (Cth) ("PPSA")**
- 12.1. The Customer acknowledges that these Terms and Conditions will constitute a Security Agreement which creates a security interest in favour of the Supplier over all present and after acquired Goods and/or Services supplied by the Supplier to the Customer to secure the payment of the Price or any other amount owing under this agreement from time to time including future advances.
- 12.2. The Customer acknowledges that by accepting these Terms and Conditions and by virtue of the retention of title clause as provided for in Clause 13, the security interest is a purchase money security interest ("PMSI") as defined under Section 14 of the PPSA for all present, after acquired Goods and/or Services including any Commingled Goods.
- 12.3. The security interest will continue to apply as an interest in the Collateral for the purposes of PPSA with priority over registered or unregistered security interest.
- 12.4. The Supplier may register the security interest as PMSI on the Personal Property Securities Register ("PPSR") under the PPSA without providing further notice to the Customer.
- 12.5. The Customer agrees the Supplier is not required to disclose information pertaining to the Supplier's security interest to an interest party unless required to do pursuant to PPSA or under the general law.
- 12.6. The Customer agrees and undertakes:
- 12.6.1. To sign any documents and/or provide further information reasonably required by the Supplier to register Financing Statement or Financing Change Statement on the PPSR;
- 12.6.2. To indemnify the Supplier for all expenses and/or costs incurred by the Supplier in registering a Financing Statement or Financing Change Statement on PPSR including the costs of amending, maintaining, releasing and enforcing any security interests in the Goods;
- 12.6.3. Not to register and/or make a demand to alter a Financing Statement in the Collateral without prior written consent of the Supplier;
- 12.6.4. To provide the Supplier with 7 days written notice of any change or proposed change to the Customer's business name, address, contact details or other changes in the Customer's details registered on the PPSR;
- 12.6.5. To waive any rights of enforcement under Section 115 of the PPSA for Collateral not used predominantly for personal, domestic or household purposes;
- 12.6.6. To waive any rights to receive Verification Statement in respect of any Financial Statement or Financing Charge Statement under Section 157 of the PPSA.
- 13. RETURN OF GOODS**
- 13.1. Goods may be returned for credit if they are:
- 13.1.1. Wrongly supplied or oversupplied or which are defective, faulty or not in accordance with Order or Quote.
- 13.1.2. These goods must be returned within fourteen (14) days from the date of delivery of the Goods and must be in their original condition.
- 13.1.3. Items manufactured to specific requirements are not returnable under any circumstances.
- 13.1.4. Restocking fee may apply.
- 14. TERMINATION AND CANCELLATION**
- Cancellation by Supplier**
- 14.1. The Supplier may cancel any Order to which these Terms and Conditions apply or cancel delivery of Goods at any time before payment is made by the Customer by giving written notice to the Customer. The Supplier shall not be liable for any loss or damage or consequential loss or damage whatever arising from such cancellation.
- 14.2. Without prejudice to the Supplier's other remedies at law, the Supplier shall be entitled to cancel all or any part of any Order of the Customer which remains unfulfilled and all amounts owing to the Supplier shall, whether or not due for payment, become immediately payable in the event that:
- 14.2.1. The Customer becomes insolvent, convenes a meeting with its creditors or proposes or enters into an arrangement with creditors, or makes an assignment for the benefit of its creditors; or
- 14.2.2. A receiver, manager, liquidator (provisional or otherwise) or similar person is appointed in respect of the Customer or any asset of the Customer.
- Cancellation by Customer**
- 14.3. Any Order cannot be cancelled by the Customer unless expressly agreed to by the Supplier in writing.
- 14.4. In the event that the Customer cancels delivery of Goods the Customer shall be liable for any loss incurred by the Supplier (including, but not limited to, any loss of profits) up to the time of cancellation.
- 14.5. If the Customer places an Order with the Supplier and the Supplier places an Order with a third party Supplier to meet the Customer's request, the Customer shall be liable for the Price of the Goods ordered if the Customer cancels the Order and the Goods have already been dispatched.
- 14.6. The Supplier acknowledges that in the event the Supplier contravenes any of the terms of this Agreement, then clauses 14.3, 14.4 and 14.5 will not apply.
- 15. SET-OFF**
- 15.1. The Customer shall have no right of set-off in any suit, claim or proceeding brought by the Supplier against the Customer for default in payment.
- 15.2. The Customer acknowledges that the Supplier can produce this clause in bar of any proceeding for set-off.
- 16. INSURANCE**
- 16.1. The Supplier is not liable to provide any insurance cover in relation to the provision of the Goods and Services. The Customer is responsible to effect whatever insurance cover he requires at his own expense.
- 17. AGREED USE**
- 17.1. The Customer acknowledges that the Customer may forfeit any rights if any, he may have against the Supplier if:
- 17.1.1. The Goods are applied for any other use to which the Goods are not intended for and/or not in accordance with any applicable manual;
- 17.1.2. Any alteration to the Goods is carried out other than in accordance with intended alterations and/or the Goods are not repaired by an authorised repairer.
- 17.2. The Customer further acknowledges sole responsibility for any damage or injury to property or person caused by using the Goods in any way and shall indemnify in full the Supplier, its servant and its agents in relation to all such claims.
- 18. DISPUTE RESOLUTION**
- 18.1. All disputes between the Supplier and the Customer in connection with:
- 18.1.1. This Agreement; and
- 18.1.2. Any warranty given by the Supplier to the Customer under this Agreement or otherwise in relation to the Service or the Goods, (**Dispute**) will be dealt with in accordance with this clause 18 whenever the Dispute is raised.
- 18.2. Any party (**Disputing Party**) may within 30 days after the Dispute arises, give a notice to the other party:
- 18.2.1. Setting out details of the Dispute, the reason the Dispute should be resolved in favour of the Disputing Party and any other matter that may, in the reasonable opinion of the Disputing Party, be relevant to the resolution of the Dispute; and
- 18.2.2. Requiring the other party to, in good faith, discuss and negotiate the Dispute with the Disputing Party to resolve the Dispute within 28 days of the date of the notice.
- If the Dispute is then not resolved within 28 days, then the Supplier may provide the Customer with a further notice referring the Dispute either to mediation, or determination (**Determination**) by an independent expert (**Expert**).
- 18.4. The Supplier may provide a notice referring the Dispute to Determination if the Dispute is not resolved at mediation.
- 18.5. Any mediator or independent expert will be mutually agreed (or failing agreement within 7 days of the Supplier proposing mediation or Determination, then the mediator or expert will be nominated at the request of any party by the President of the Law Society of South Australia).
- 18.6. If the Supplier proposes mediation or Determination, then the Customer agrees to request an adjournment of any Court or Tribunal proceedings for at least 120 days to allow mediation or Determination to occur.
- For any Determination:
- 18.7.1. The Expert is an expert and not an arbitrator;
- 18.7.2. The Determination is final and binding on the parties; and
- 18.7.3. The proceedings for the purposes of the Determination will be conducted in accordance with the laws of evidence.
- 18.7.4. The parties may make submissions which the Expert must take into account when making the Determination;
- 18.7.5. The Expert must provide its Determination to the parties in writing, with reasons for the Determination and within 21 days of the appointment of the Expert; and
- 18.8. Unless otherwise agreed by the parties in writing:
- 18.8.1. The place of the proceedings for the purposes of the mediation or Determination will be Adelaide, South Australia;
- 18.8.2. Each party is entitled to legal representation at all stages of the mediation or Determination;
- 18.8.3. Each party will bear its own costs and expenses in relation to the mediation or Determination;
- 18.8.4. The parties will pay in equal shares the mediator or Expert's fees and expenses and the cost of the mediation or Determination including room hire (if any); and
- 18.8.5. The provisions of the *Commercial Arbitration Act 1986* (SA) do not apply to the resolution of any Dispute under the provisions of this clause 18.
- 19. JURISDICTION**
- 19.1. This Agreement is deemed to be made in the State of South Australia and all disputes hereunder shall be determined by the appropriate courts of South Australia.
- 20. PRIVACY ACT 1988**
- 20.1. The Customer and/or the Guarantor/s agrees;
- 20.1.1. For the Supplier to obtain from a credit reporting agency a credit report containing personal credit information about the Customer and Guarantor/s in relation to credit provided by the Supplier.
- 20.1.2. That the Supplier may exchange information about the Customer and the Guarantor/s with those credit providers either named as trade referees by the Customer or named in a consumer credit report issued by a credit reporting agency.
- 20.1.3. The Customer consent to the Supplier being given a consumer credit report to collect overdue payment on commercial credit (Section 18K (1)(h) *Privacy Act 1988*).
- 21. AGREEMENT**
- 21.1. This Agreement can only be amended in writing signed by each of the parties.
- 21.2. All prior discussions and negotiations are merged within this document and the Supplier expressly waives all prior representations made by him or on his behalf that are in conflict with any clauses in this document in any way.
- 21.3. Nothing in these Terms and Conditions is intended to have the effect of contravening any applicable provisions of the *Competition and Consumer Act 2010* or the *Fair Trading Acts* in each of the States and Territories of Australia.

Where you can find us

SOUTH AUSTRALIA (ADA)

Lonsdale

15 - 19 Roxburgh Ave
Lonsdale, SA 5160
P: 08 8307 2300
E: lonsdale@airdiffusion.com.au

Salisbury

72 - 78 Willochra Rd
Salisbury Plain, SA 5109
P: 08 8182 0777
E: salisbury@airdiffusion.com.au

Welland

99 - 109 Frederick St
Welland, SA 5007
P: 08 8116 3600
E: welland@airdiffusion.com.au

QUEENSLAND (ADA)

Acacia

7/29 McCotter St
Acacia Ridge, QLD 4110
P: 07 3714 8900
E: acacia@airdiffusion.com.au

Eagle Farm

71 Lavarack Ave
Eagle Farm, QLD 4009
P: 07 3000 7979
E: eaglefarm@airdiffusion.com.au

NORTHERN TERRITORY (ADA)

Winnellie

116 Winnellie Rd
Winnellie, NT 0820
P: 08 8984 6800
E: winnellie@airdiffusion.com.au

VICTORIA (PALTECH)

Knoxfield

8 Kingston Park Court
Knoxfield, VIC 3180
P: 03 9212 7777
E: knoxfield@paltech.com.au

Thomastown

2/28 Keon Parade
Thomastown, VIC 3074
P: 03 9462 4444
E: thomastown@paltech.com.au

Pakenham

28 Link Road
Pakenham, VIC 3810
P: 03 5942 6799
E: pakenham@paltech.com.au

Truganina

6 Archer Road
Truganina, VIC 3555
P: 03 8375 3799
E: truganina@paltech.com.au

Bendigo

38 Abel Street, Golden Square
Bendigo, VIC 3555
P: 03 5443 3334
E: bendigo@paltech.com.au

ACCOUNTS (ADA & PALTECH)

PO Box 247
Lonsdale DC, SA 5160
P: 08 8307 2310
E: accounts@airdiffusion.com.au



AIR DIFFUSION AUSTRALIA

Lonsdale, SA	08 8307 2300
Salisbury, SA	08 8182 0777
Welland, SA	08 8116 3600
Acacia, QLD	07 3714 8900
Eagle Farm, QLD	07 3000 7979
Winnellie, NT	08 8984 6800

PALTECH

Knoxfield, VIC	03 9212 7777
Thomastown, VIC	03 9462 4444
Pakenham, VIC	03 5942 6799
Truganina, VIC	03 8375 3799
Bendigo, VIC	03 5443 3334



www.airdiffusion.com.au

paltech

www.paltech.com.au