

NEW PRODUCT



FDUA140VG | FDU A160VG SPLITTABLE DUCTED INDOOR UNIT

- INDOOR UNIT SEPARATES INTO TWO SECTIONS FOR EASIER HANDLING INTO THE ROOF SPACE
- UP TO 1,000 l/s AIRFLOW
- UP TO 150Pa EXTERNAL STATIC PRESSURE
- BUILT-IN DRAIN PUMP
- RETURN AIR CONNECTION CAN BE CONVERTED FROM REAR TO TOP
- RETURN AIR CONNECTION IS VIA 2 X OVAL SPIGOTS FOR 2 X Ø400mm FLEXIBLE DUCTS
- COMPATIBLE WITH BOTH FLEXIZONE* AND AIRZONE ZONING SOLUTIONS

*RC-EXZ3A controller and MH-4ZRM required

mhiaa.com.au | 1300 138 007

Mitsubishi Heavy Industries Air-Conditioners Australia, Pty. Ltd.

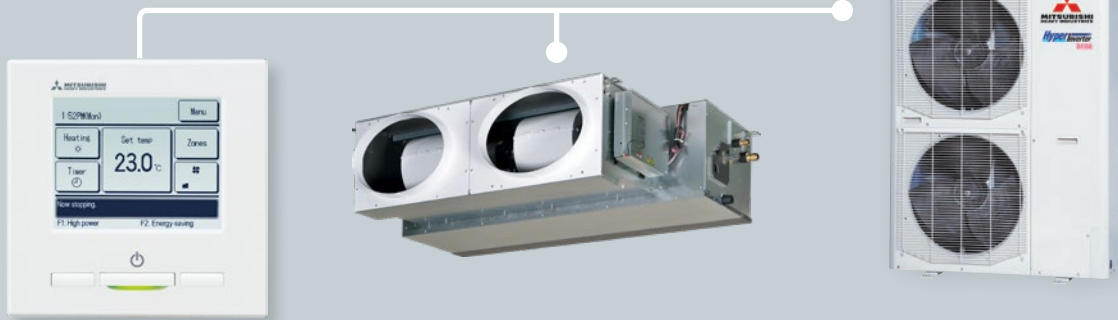


AIR CONDITIONING

FDUA140VG | FDU A160VG

SPLITTABLE DUCTED INDOOR UNIT

REVERSE
CYCLE



14.0kW | 16.0kW

HIGH STATIC PRESSURE

SINGLE PHASE MODEL (14.0KW)

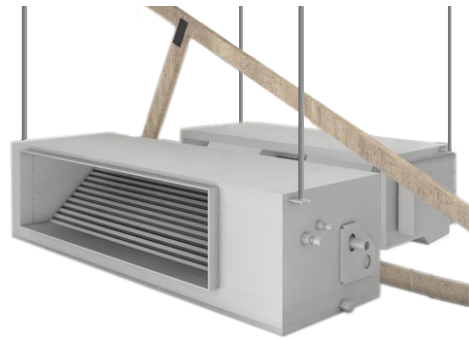
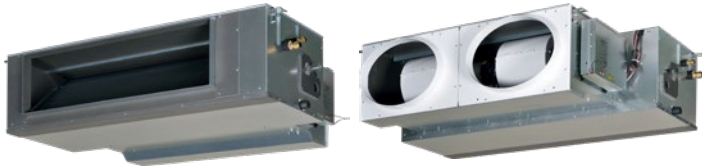
THREE PHASE MODELS (14.0KW and 16.0KW)

SPLITTABLE INDOOR UNIT

A unique design allows the fan deck and heat exchanger to be separated for easier handling during installation.

FRONT (SUPPLY AIR)

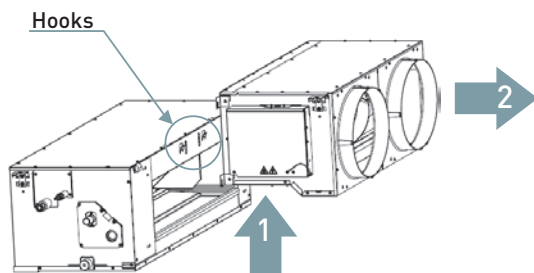
BACK (RETURN AIR)



Note: Unit must be reassembled prior to operation*

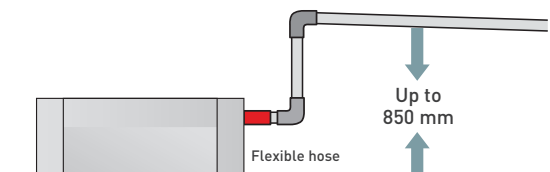
EASY SEPARATION

Fan deck assembly and heat exchanger are designed to easily separate and come back together. Return air connection can also be converted to allow suction from the back to the top of the unit.



BUILT-IN DRAIN PUMP

A built-in drain pump with a lift of 850mm allows greater flexibility during installation.



mhiaa.com.au | 1300 138 007

Mitsubishi Heavy Industries Air-Conditioners Australia, Pty. Ltd.

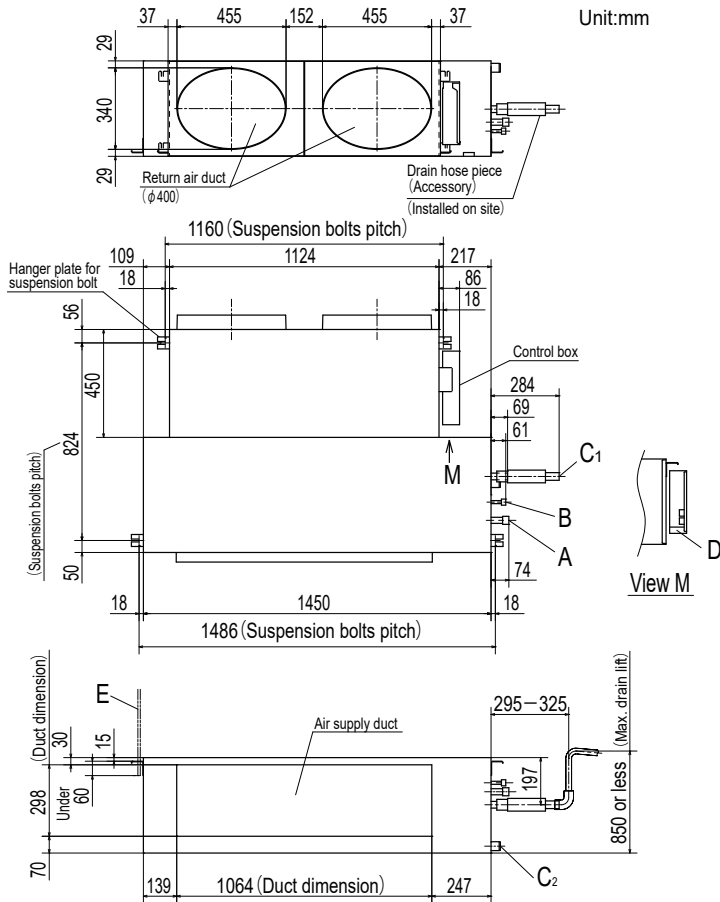


AIR CONDITIONING

FDDUA140VG | FDDUA160VG

SPLITTABLE DUCTED INDOOR UNIT

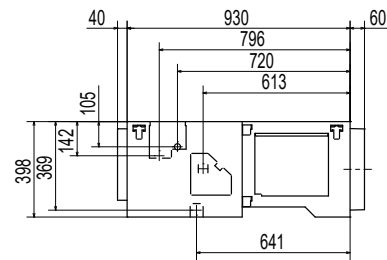
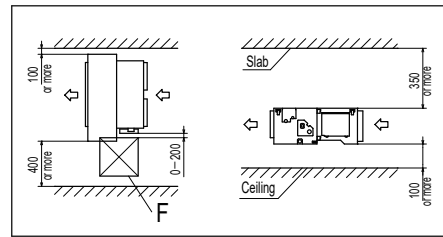
Model FDDUA140VG, FDDUA160VG



Unit:mm

Symbol	Content	
A	Gas piping	φ 15.88 (5/8") (Flare)
B	Liquid piping	φ 9.52 (3/8") (Flare)
C1	Drain piping	VP25 (O.D.32)
C2	Drain piping (Gravity drainage)	VP25 (O.D.32)
D	Hole for wiring	
E	Suspension bolts	(M10)
F	Inspection opening	(450×450)

Space for installation and service



Return air duct dimension = 2 x oval spigots for 2 x Ø400 mm Flexible ducts
Supply air duct dimension = 1064mm x 298mm for hard duct.

System		FDDUA140AVNXVG	FDDUA140AVSXVG	FDDUA160AVSAVG
Indoor unit		FDDUA140VG	FDDUA140VG	FDDUA160VG
Outdoor unit		FDCA140VNX	FDCA140VSX	FDCA160VSA
Power source (Outdoor Unit)		1 Phase 240V 50Hz		3 Phase 380-415V 50Hz
Control Options		Wired: RC-E5, RC-EXZ3A, RCH-E3. Wireless: RCN-KIT4-E2. Wi-Fi*: MH-RC-WIFI-1B		
Rated Capacity Cool/Heat		kW	14.0 / 16.0	14.0 / 16.0
Weight	Indoor	kg	66	66
	Outdoor	kg	106	143
External Dimensions (HxWxD)	Indoor		398x1450x930	398x1450x930
	Outdoor		1300x970x370	1505x970x370
Refrigerant Piping	Liquid Line	mm	Ø9.52	Ø12.7
	Gas Line	mm	Ø15.88	Ø22.22, Ø25.4 or Ø28.58
Refrigerant R32	Precharged	m	30	30
	Quantity	kg	(R410A) 4.5	(R410A) 7.2
Max Pipe Length		m	100	**70

* Individual Zone on/off function unavailable

**Maximum 70m (Gas piping:Ø25.4 or Ø28.58), Maximum 35m (Gas piping:Ø22.22)

