



HOSHINO



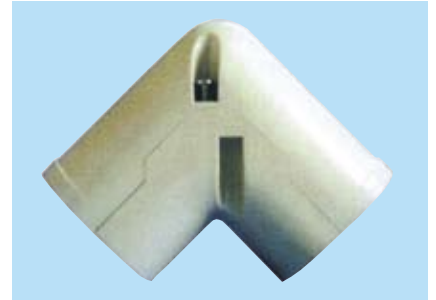
PIPE DUCT 2M LENGTH

<i>Code</i>	<i>Size</i>
WD75	75mm
WD100	100mm
WD120	120mm



FLAT SURFACE CORNER

<i>Code</i>	<i>Size</i>
FSC75	75mm
FSC100	100mm
FSC120	120mm



90° CORNER

<i>Code</i>	<i>Size</i>
C75	75mm
C100	100mm
C120	120mm



JOINER

<i>Code</i>	<i>Size</i>
J75	75mm
J100	100mm
J120	120mm



CEILING CAP

<i>Code</i>	<i>Size</i>
CC75	75mm
CC100	100mm
CC120	120mm



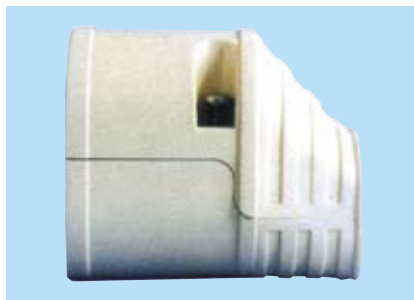
WALL ENTRY

<i>Code</i>	<i>Size</i>
WE75	75mm
WE100	100mm
WE120	120mm



FLEXIBLE JOINER

<i>Code</i>	<i>Size</i>
FJ75	75mm
FJ100	100mm
FJ120	120mm



END COVER

<i>Code</i>	<i>Size</i>
EC75	75mm
EC100	100mm
EC120	120mm

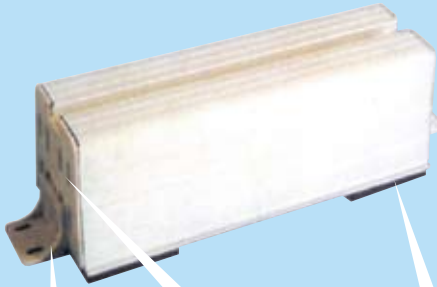


REDUCER

<i>Code</i>	<i>Size</i>
R75	100-75mm
R1210	120-100mm
R1275	120-75mm



HOSHINO



MOUNT BLOCK

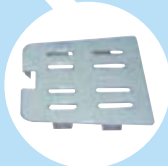
- 1000 LONG MB1000
- 600 LONG MB600
- 450 LONG MB450
- 350 LONG MB350



DRAIN HOSE
16mm x 50m
UV RATED
(FDH)



FIXING BRACKET
(PFB)



END CAP
(PEC)



RUBBER VIBRATION PAD
(RVP)

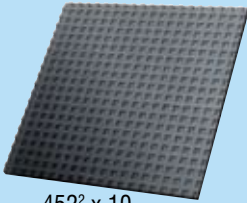


RUBBER VIBRATION MOUNT
(RVM)

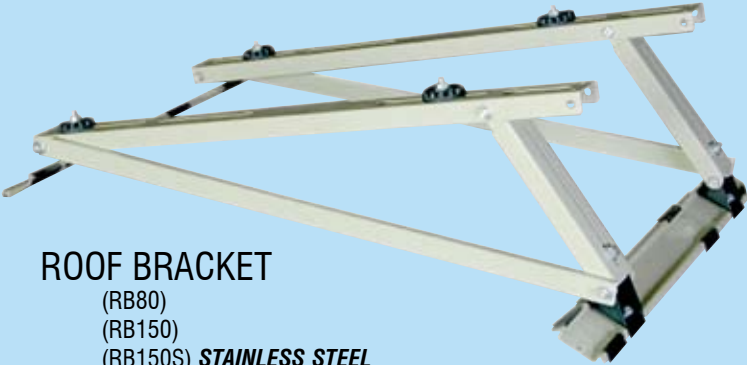
WAFFLE PADS



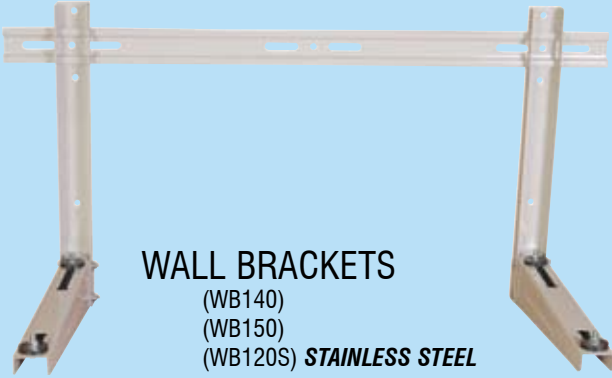
1000 x 100 x 10
(WP1010)



452² x 10
(WP10)



ROOF BRACKET
(RB80)
(RB150)
(RB150S) **STAINLESS STEEL**



WALL BRACKETS
(WB140)
(WB150)
(WB120S) **STAINLESS STEEL**

Distributed by: